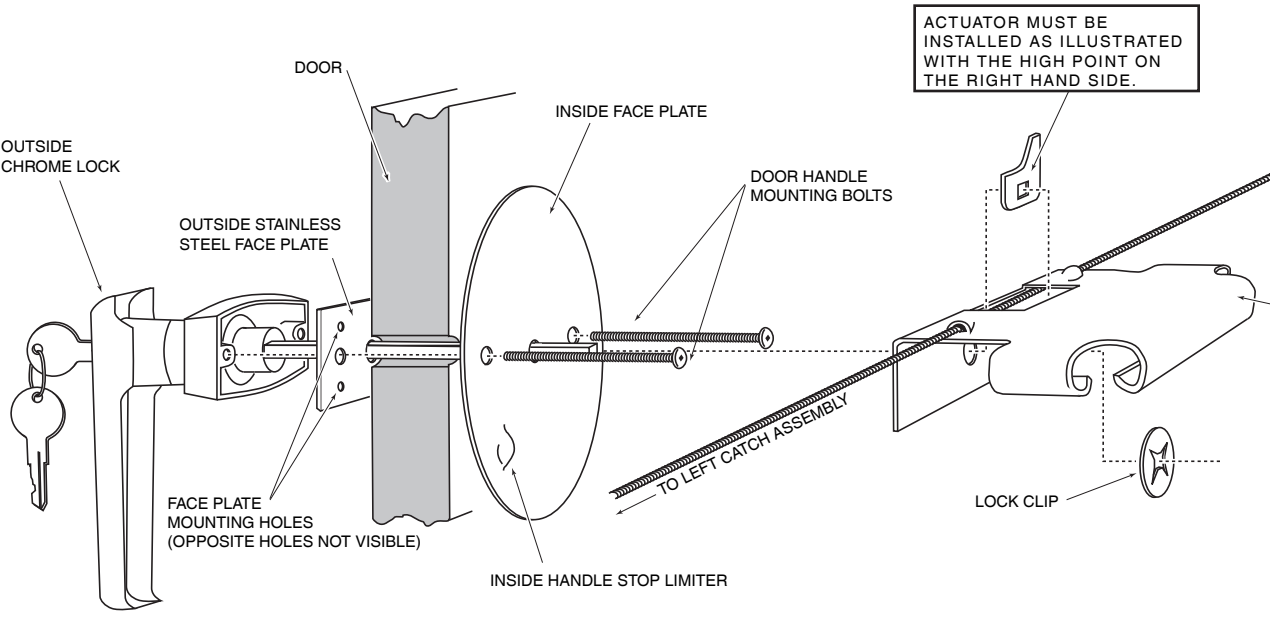
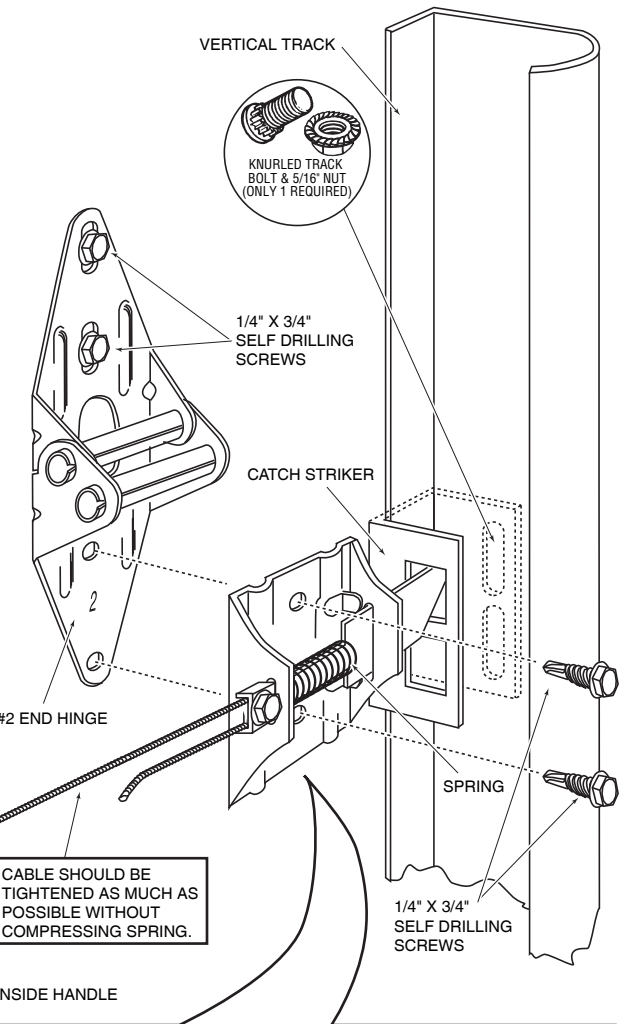


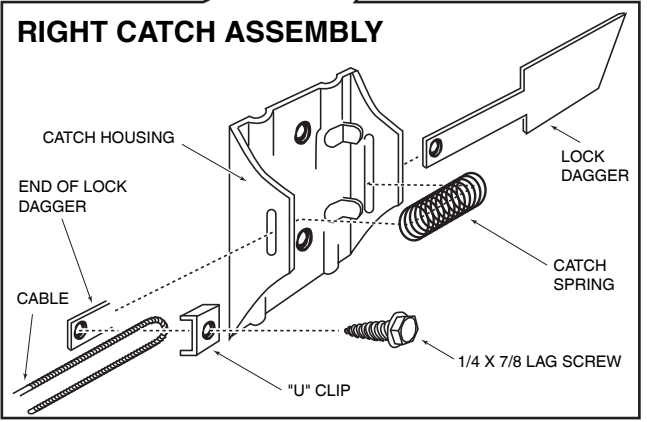
SQUARE UP CHROME FACE PLATE TO OUTSIDE OF #2 DOOR SECTION & BETWEEN EMBOSMENTS WITH THE PROTECTIVE PEEL OFF FILM ON THE OUTSIDE. ATTACH TO THE DOOR SECTION USING #10 SHEET METAL SCREWS. THE FOUR PRE-PUNCHED HOLES ON THE OUTSIDE EDGES OF THE PLATE ARE PROVIDED FOR THIS PURPOSE. (DO NOT OVER TIGHTEN)

USING THE MOUNTED FACE PLATE AS A TEMPLATE, DRILL THE THREE CENTRE HOLES (THE SAME SIZE AS STAINLESS STEEL FACE PLATE HOLES) COMPLETELY THROUGH THE DOOR, MAKING SURE THAT THE DRILL IS HELD LEVEL AND STRAIGHT.

NOTE: ILLUSTRATION SHOWS A SINGLE WIDE DOOR. FOR WIDER DOORS, THE LOCK MAY BE MOUNTED IN THE CENTRE OF THE DOOR IF DESIRED.



CABLE SHOULD BE TIGHTENED AS MUCH AS POSSIBLE WITHOUT COMPRESSING SPRING.



STEEL-CRAFT
DOOR PRODUCTS LTD.

THERMOCRAFT
Door Lock
Installation Instructions